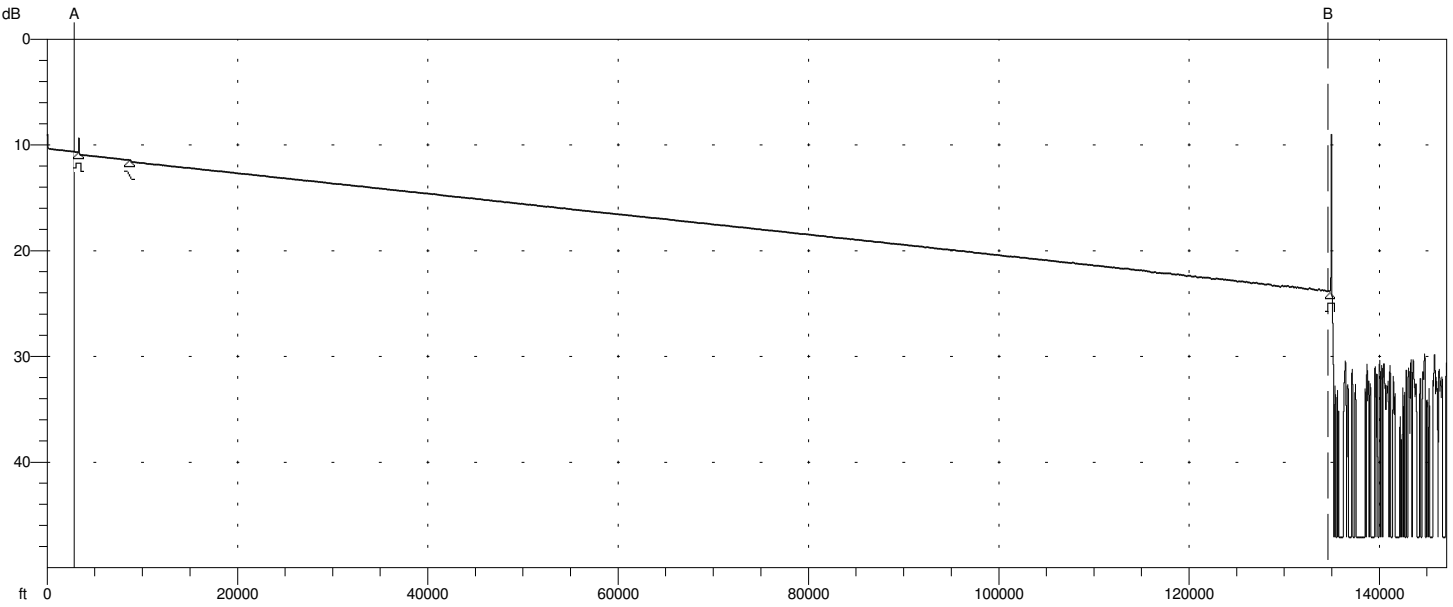


BLOCKDILL1310.029.SOR

328311 ft/16.416 ft



|                   |                         |                    |
|-------------------|-------------------------|--------------------|
| A: 2836 ft        | Index: 1.467700         | [H] 200ns / 65.6ft |
| B: 134584 ft      | 2-Point Loss: 13.211 dB | Avg: Fast 5120     |
| A -> B: 131748 ft | Reflectance: N/A        | /1310 nm/SM        |

```

----- Page 1 -----
[ Language: EN ]
[ Cable ID: ]
[ Fiber ID: 29 ]
[ Wavelength: 1310 ]
[ Org. Loc: ]
[ Term. Loc: ]
[ Cable Code: ]
[ Condition: OT ]
[ Operator: ]
[ Comment: ]
[ Supplier: Anritsu ]
[ OTDR Model: MT9083B2-063 ]
[ S/N: 6201256400 ]
[ Optics Mod: ]
[ S/N: ]
[ S/W Rev.: 1.05 ]
[ Other: ]
  
```

```

Primary Trace: BLOCKDILL1310.029.SOR
Date: 09/16/16 Range: 328311 ft
Time: 09:51 AM Resolution: 16.416 ft
Product Type: MT9083B2-0 Pulse Width: 200 ns
Opt. Module: Index: 1.467700
Fiber Type: Singlemode WaveLength: 1310 nm
FAS Thresholds: Horz. Shift: 0 ft
Loss: 0.05 dB Vert. Shift: 0.00 dB
Reflectance: -60.00 dB No. Averages: 5120
Fiber Break: 3.00 dB
Backscatter: -78.50 Trace Type: SR4731
Trace Flags: Analysis
ORL: N/A
  
```

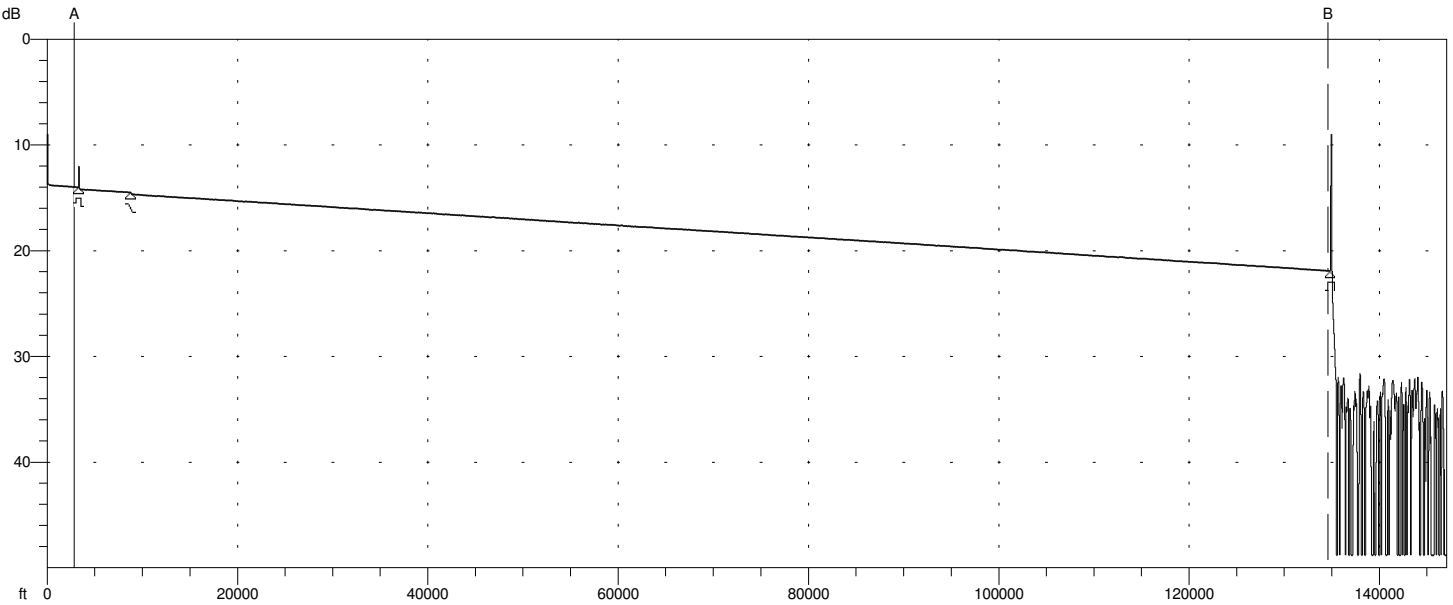
Analysis Results -- BLOCKDILL1310.029.SOR

| Feature #/Type | Location (ft) | Event-Event (dB) (dB/Km) | Loss (dB) | Ref1 (dB) |
|----------------|---------------|--------------------------|-----------|-----------|
| 1/R            | 3286          | ?? ??                    | 0.22      | >-56.35   |
| 2/N            | 8668          | 0.53 0.321               | 0.16      |           |
| 3/E            | 134809        | 12.25 0.319              | >3.00     | >-14.14   |

Overall (End-to-End) Loss: ??

BLOCKDILL1550.029.SOR

328311 ft/16.416 ft



|                   |                        |                    |
|-------------------|------------------------|--------------------|
| A: 2836 ft        | Index: 1.468200        | [H] 200ns / 65.6ft |
| B: 134584 ft      | 2-Point Loss: 7.935 dB | Avg: Fast 5120     |
| A -> B: 131748 ft | Reflectance: N/A       | /1550 nm/SM        |

```

----- Page 1 -----
[ Language: EN ]
[ Cable ID: ]
[ Fiber ID: 29 ]
[ Wavelength: 1550 ]
[ Org. Loc: ]
[ Term. Loc: ]
[ Cable Code: ]
[ Condition: OT ]
[ Operator: ]
[ Comment: ]
[ Supplier: Anritsu ]
[ OTDR Model: MT9083B2-063 ]
[ S/N: 6201256400 ]
[ Optics Mod: ]
[ S/N: ]
[ S/W Rev.: 1.05 ]
[ Other: ]
    
```

```

Primary Trace: BLOCKDILL1550.029.SOR
Date: 09/16/16 Range: 328311 ft
Time: 09:51 AM Resolution: 16.416 ft
Product Type: MT9083B2-0 Pulse Width: 200 ns
Opt. Module: Index: 1.468200
Fiber Type: Singlemode WaveLength: 1550 nm
FAS Thresholds: Horz. Shift: 0 ft
Loss: 0.05 dB Vert. Shift: 0.00 dB
Reflectance: -60.00 dB No. Averages: 5120
Fiber Break: 3.00 dB
Backscatter: -81.50 Trace Type: SR4731
Trace Flags: Analysis
ORL: N/A
    
```

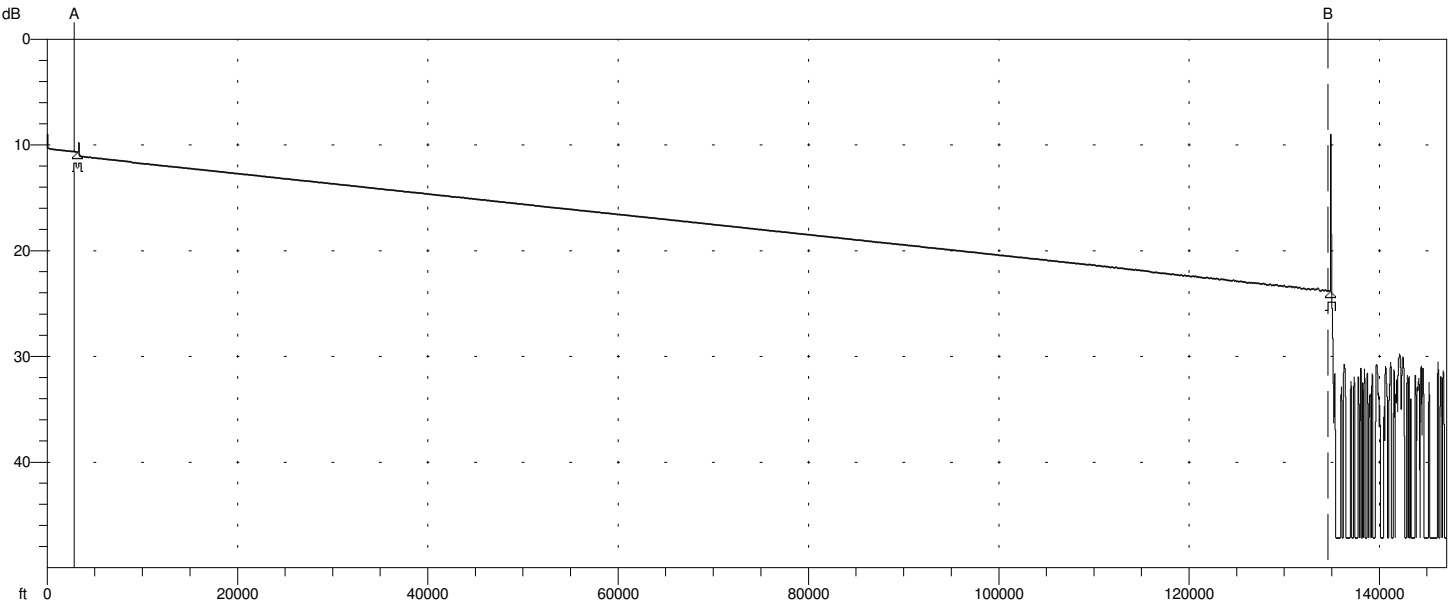
Analysis Results -- BLOCKDILL1550.029.SOR

| Feature #/Type | Location (ft) | Event-Event (dB) (dB/Km) | Loss (dB) | Ref1 (dB) |
|----------------|---------------|--------------------------|-----------|-----------|
| 1/R            | 3268          | -6.14 -6.163             | 0.18      | >-56.85   |
| 2/N            | 8748          | 0.31 0.184               | 0.19      |           |
| 3/E            | 134797        | 7.23 0.188               | >3.00     | >-14.75   |

Overall (End-to-End) Loss: 1.76 dB

BLOCKDILL1310.030.SOR

328311 ft/16.416 ft



|                   |                         |                    |
|-------------------|-------------------------|--------------------|
| A: 2836 ft        | Index: 1.467700         | [H] 200ns / 65.6ft |
| B: 134584 ft      | 2-Point Loss: 13.218 dB | Avg: Fast 5120     |
| A -> B: 131748 ft | Reflectance: N/A        | /1310 nm/SM        |

```

----- Page 1 -----
[ Language: EN ]
[ Cable ID: ]
[ Fiber ID: 30 ]
[ Wavelength: 1310 ]
[ Org. Loc: ]
[ Term. Loc: ]
[ Cable Code: ]
[ Condition: OT ]
[ Operator: ]
[ Comment: ]
[ Supplier: Anritsu ]
[ OTDR Model: MT9083B2-063 ]
[ S/N: 6201256400 ]
[ Optics Mod: ]
[ S/N: ]
[ S/W Rev.: 1.05 ]
[ Other: ]
  
```

```

Primary Trace: BLOCKDILL1310.030.SOR
Date: 09/16/16 Range: 328311 ft
Time: 09:52 AM Resolution: 16.416 ft
Product Type: MT9083B2-0 Pulse Width: 200 ns
Opt. Module: Index: 1.467700
Fiber Type: Singlemode WaveLength: 1310 nm
FAS Thresholds: Horz. Shift: 0 ft
Loss: 0.05 dB Vert. Shift: 0.00 dB
Reflectance: -60.00 dB No. Averages: 5120
Fiber Break: 3.00 dB
Backscatter: -78.50 Trace Type: SR4731
Trace Flags: Analysis
ORL: N/A
  
```

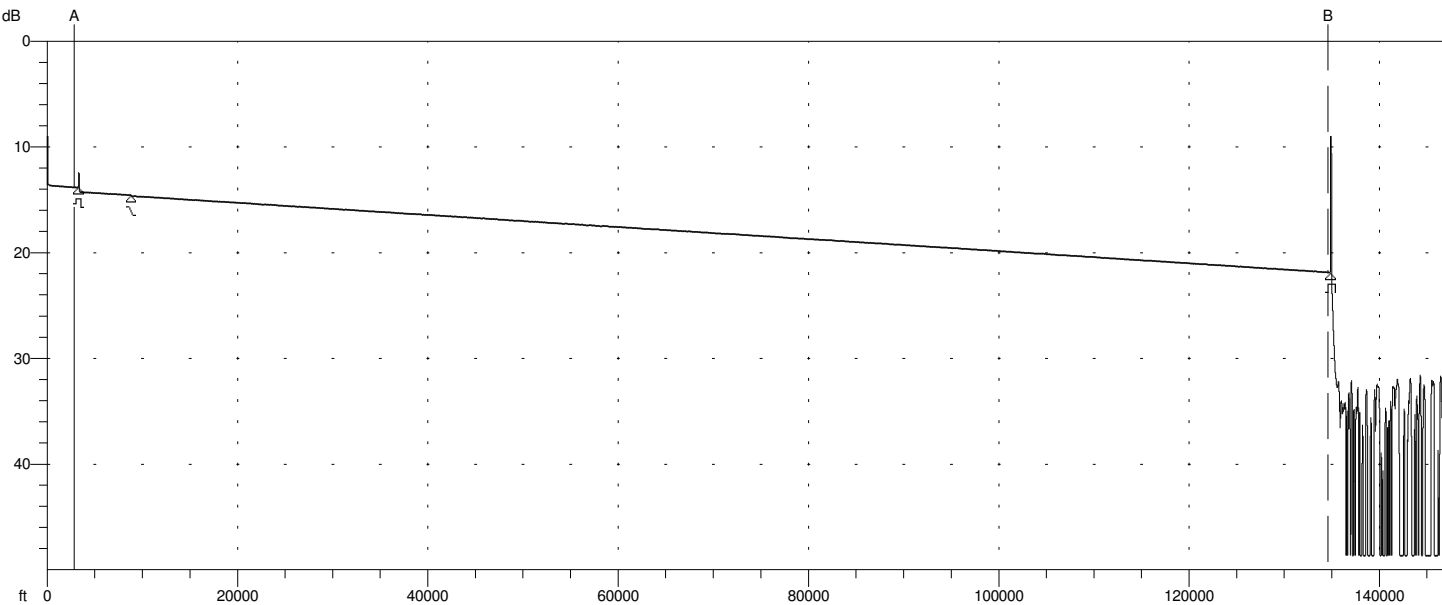
Analysis Results -- BLOCKDILL1310.030.SOR

| Feature #/Type | Location (ft) | Event-Event (dB) (dB/Km) | Loss (dB) | Refl (dB) |
|----------------|---------------|--------------------------|-----------|-----------|
| 1/G            | 3135-3470     | -7.70 -8.054             | 0.39      |           |
| 2/E            | 134859        | 12.78 0.318              | >3.00     | >-14.29   |

Overall (End-to-End) Loss: 5.47 dB

BLOCKDILL1550.030.SOR

328311 ft/16.416 ft



|                   |                        |                    |
|-------------------|------------------------|--------------------|
| A: 2836 ft        | Index: 1.468200        | [H] 200ns / 65.6ft |
| B: 134584 ft      | 2-Point Loss: 8.022 dB | Avg: Fast 5120     |
| A -> B: 131748 ft | Reflectance: N/A       | /1550 nm/SM        |

```

----- Page 1 -----
[ Language: EN ]
[ Cable ID: ]
[ Fiber ID: 30 ]
[ Wavelength: 1550 ]
[ Org. Loc: ]
[ Term. Loc: ]
[ Cable Code: ]
[ Condition: OT ]
[ Operator: ]
[ Comment: ]
[ Supplier: Anritsu ]
[ OTDR Model: MT9083B2-063 ]
[ S/N: 6201256400 ]
[ Optics Mod: ]
[ S/N: ]
[ S/W Rev.: 1.05 ]
[ Other: ]
    
```

```

Primary Trace: BLOCKDILL1550.030.SOR
Date: 09/16/16 Range: 328311 ft
Time: 09:52 AM Resolution: 16.416 ft
Product Type: MT9083B2-0 Pulse Width: 200 ns
Opt. Module: Index: 1.468200
Fiber Type: Singlemode WaveLength: 1550 nm
FAS Thresholds: Horz. Shift: 0 ft
Loss: 0.05 dB Vert. Shift: 0.00 dB
Reflectance: -60.00 dB No. Averages: 5120
Fiber Break: 3.00 dB
Backscatter: -81.50 Trace Type: SR4731
Trace Flags: Analysis
ORL: N/A
    
```

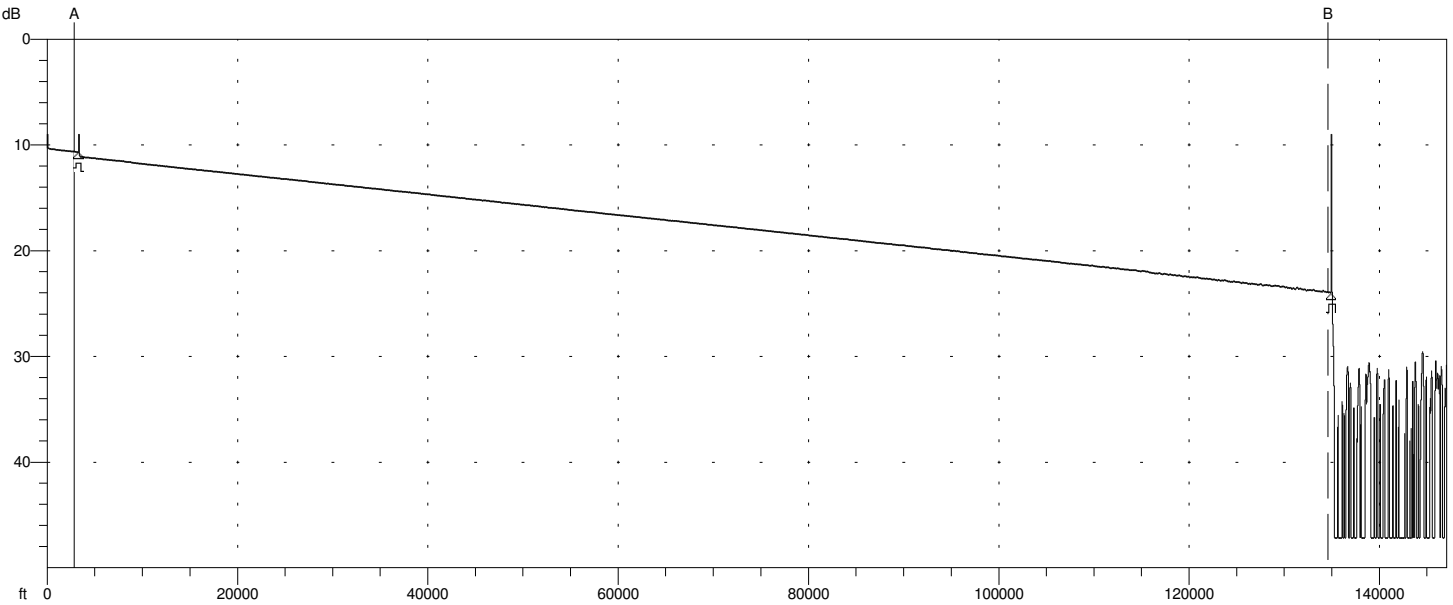
Analysis Results -- BLOCKDILL1550.030.SOR

| Feature #/Type | Location (ft) | Event-Event (dB) (dB/Km) | Loss (dB) | Refl (dB) |
|----------------|---------------|--------------------------|-----------|-----------|
| 1/R            | 3235          | -6.32 -6.409             | 0.40      | >-59.01   |
| 2/N            | 8799          | 0.32 0.187               | 0.07      |           |
| 3/E            | 134847        | 7.24 0.188               | >3.00     | >-14.81   |

Overall (End-to-End) Loss: 1.72 dB

BLOCKDILL1310.031.SOR

328311 ft/16.416 ft



|                   |                         |                    |
|-------------------|-------------------------|--------------------|
| A: 2836 ft        | Index: 1.467700         | [H] 200ns / 65.6ft |
| B: 134584 ft      | 2-Point Loss: 13.278 dB | Avg: Fast 5120     |
| A -> B: 131748 ft | Reflectance: N/A        | /1310 nm/SM        |

```

----- Page 1 -----
[ Language: EN ]
[ Cable ID: ]
[ Fiber ID: 31 ]
[ Wavelength: 1310 ]
[ Org. Loc: ]
[ Term. Loc: ]
[ Cable Code: ]
[ Condition: OT ]
[ Operator: ]
[ Comment: ]
[ Supplier: Anritsu ]
[ OTDR Model: MT9083B2-063 ]
[ S/N: 6201256400 ]
[ Optics Mod: ]
[ S/N: ]
[ S/W Rev.: 1.05 ]
[ Other: ]

```

```

Primary Trace: BLOCKDILL1310.031.SOR
Date: 09/16/16 Range: 328311 ft
Time: 09:53 AM Resolution: 16.416 ft
Product Type: MT9083B2-0 Pulse Width: 200 ns
Opt. Module: Index: 1.467700
Fiber Type: Singlemode WaveLength: 1310 nm
FAS Thresholds: Horz. Shift: 0 ft
Loss: 0.05 dB Vert. Shift: 0.00 dB
Reflectance: -60.00 dB No. Averages: 5120
Fiber Break: 3.00 dB
Backscatter: -78.50 Trace Type: SR4731
Trace Flags: Analysis
ORL: N/A

```

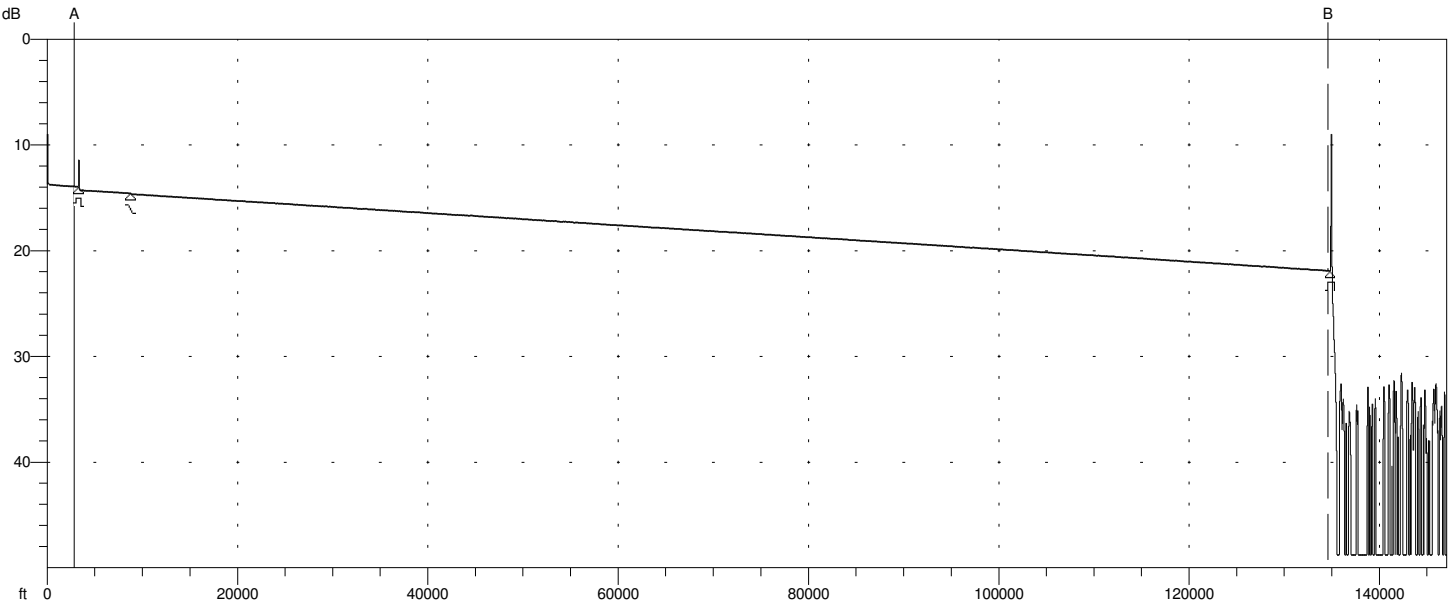
Analysis Results -- BLOCKDILL1310.031.SOR

| Feature #/Type | Location (ft) | Event-Event (dB) (dB/Km) | Loss (dB) | Ref1 (dB) |
|----------------|---------------|--------------------------|-----------|-----------|
| 1/R            | 3269          | -7.67 -7.699             | 0.43      | >-54.47   |
| 2/E            | 134893        | 12.88 0.321              | >3.00     | >-14.15   |

Overall (End-to-End) Loss: 5.64 dB

BLOCKDILL1550.031.SOR

328311 ft/16.416 ft



|                   |                        |                    |
|-------------------|------------------------|--------------------|
| A: 2836 ft        | Index: 1.468200        | [H] 200ns / 65.6ft |
| B: 134584 ft      | 2-Point Loss: 7.963 dB | Avg: Fast 5120     |
| A -> B: 131748 ft | Reflectance: N/A       | /1550 nm/SM        |

```

----- Page 1 -----
[ Language: EN ]
[ Cable ID: ]
[ Fiber ID: 31 ]
[ Wavelength: 1550 ]
[ Org. Loc: ]
[ Term. Loc: ]
[ Cable Code: ]
[ Condition: OT ]
[ Operator: ]
[ Comment: ]
[ Supplier: Anritsu ]
[ OTDR Model: MT9083B2-063 ]
[ S/N: 6201256400 ]
[ Optics Mod: ]
[ S/N: ]
[ S/W Rev.: 1.05 ]
[ Other: ]
    
```

```

Primary Trace: BLOCKDILL1550.031.SOR
Date: 09/16/16 Range: 328311 ft
Time: 09:53 AM Resolution: 16.416 ft
Product Type: MT9083B2-0 Pulse Width: 200 ns
Opt. Module: Index: 1.468200
Fiber Type: Singlemode WaveLength: 1550 nm
FAS Thresholds: Horz. Shift: 0 ft
Loss: 0.05 dB Vert. Shift: 0.00 dB
Reflectance: -60.00 dB No. Averages: 5120
Fiber Break: 3.00 dB
Backscatter: -81.50 Trace Type: SR4731
Trace Flags: Analysis
ORL: N/A
    
```

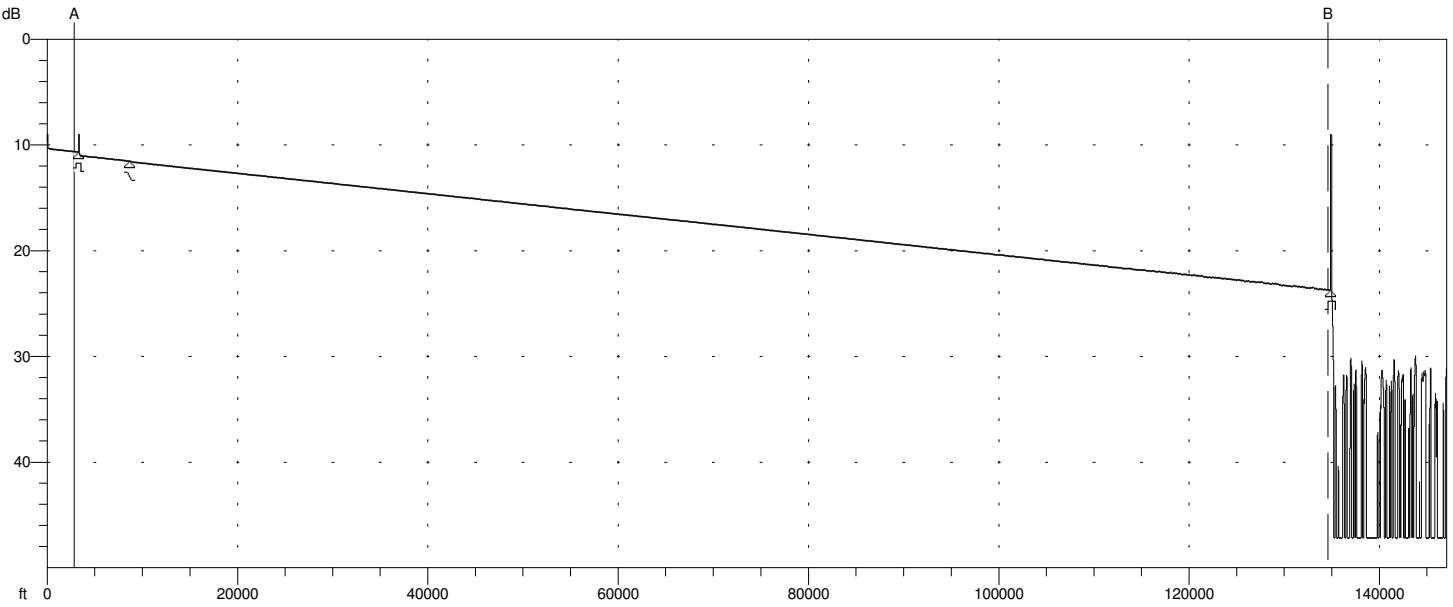
Analysis Results -- BLOCKDILL1550.031.SOR

| Feature #/Type | Location (ft) | Event-Event (dB) (dB/Km) | Loss (dB) | Refl (dB) |
|----------------|---------------|--------------------------|-----------|-----------|
| 1/R            | 3285          | -6.20 -6.197             | 0.31      | >-55.19   |
| 2/N            | 8732          | 0.31 0.189               | 0.07      |           |
| 3/E            | 134797        | 7.29 0.190               | >3.00     | >-14.70   |

Overall (End-to-End) Loss: 1.78 dB

BLOCKDILL1310.032.SOR

328311 ft/16.416 ft



|                   |                         |                    |
|-------------------|-------------------------|--------------------|
| A: 2836 ft        | Index: 1.467700         | [H] 200ns / 65.6ft |
| B: 134584 ft      | 2-Point Loss: 13.068 dB | Avg: Fast 5120     |
| A -> B: 131748 ft | Reflectance: N/A        | /1310 nm/SM        |

```

----- Page 1 -----
[ Language: EN ]
[ Cable ID: ]
[ Fiber ID: 32 ]
[ Wavelength: 1310 ]
[ Org. Loc: ]
[ Term. Loc: ]
[ Cable Code: ]
[ Condition: OT ]
[ Operator: ]
[ Comment: ]
[ Supplier: Anritsu ]
[ OTDR Model: MT9083B2-063 ]
[ S/N: 6201256400 ]
[ Optics Mod: ]
[ S/N: ]
[ S/W Rev.: 1.05 ]
[ Other: ]

```

```

Primary Trace: BLOCKDILL1310.032.SOR
Date: 09/16/16 Range: 328311 ft
Time: 09:54 AM Resolution: 16.416 ft
Product Type: MT9083B2-0 Pulse Width: 200 ns
Opt. Module: Index: 1.467700
Fiber Type: Singlemode WaveLength: 1310 nm
FAS Thresholds: Horz. Shift: 0 ft
Loss: 0.05 dB Vert. Shift: 0.00 dB
Reflectance: -60.00 dB No. Averages: 5120
Fiber Break: 3.00 dB
Backscatter: -78.50 Trace Type: SR4731
Trace Flags: Analysis
ORL: N/A

```

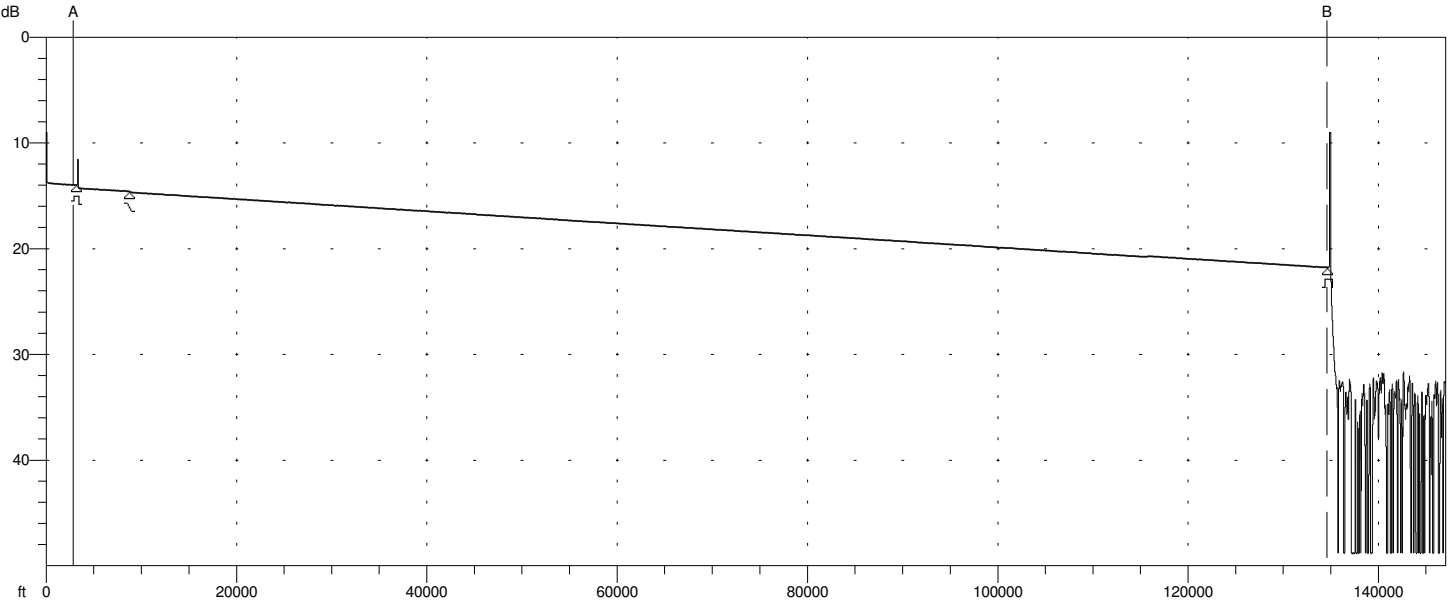
Analysis Results -- BLOCKDILL1310.032.SOR

| Feature #/Type | Location (ft) | Event-Event (dB) (dB/Km) | Loss (dB) | Ref1 (dB) |
|----------------|---------------|--------------------------|-----------|-----------|
| 1/R            | 3286          | ?? ??                    | 0.33      | >-54.33   |
| 2/N            | 8601          | 0.52 0.322               | 0.06      |           |
| 3/E            | 134859        | 12.14 0.316              | >3.00     | >-14.50   |

Overall (End-to-End) Loss: ??

BLOCKDILL1550.032.SOR

328311 ft/16.416 ft



|                   |                        |                    |
|-------------------|------------------------|--------------------|
| A: 2836 ft        | Index: 1.468200        | [H] 200ns / 65.6ft |
| B: 134584 ft      | 2-Point Loss: 7.824 dB | Avg: Fast 5120     |
| A -> B: 131748 ft | Reflectance: N/A       | /1550 nm/SM        |

```

----- Page 1 -----
[ Language: EN ]
[ Cable ID: ]
[ Fiber ID: 32 ]
[ Wavelength: 1550 ]
[ Org. Loc: ]
[ Term. Loc: ]
[ Cable Code: ]
[ Condition: OT ]
[ Operator: ]
[ Comment: ]
[ Supplier: Anritsu ]
[ OTDR Model: MT9083B2-063 ]
[ S/N: 6201256400 ]
[ Optics Mod: ]
[ S/N: ]
[ S/W Rev.: 1.05 ]
[ Other: ]
  
```

```

Primary Trace: BLOCKDILL1550.032.SOR
Date: 09/16/16 Range: 328311 ft
Time: 09:54 AM Resolution: 16.416 ft
Product Type: MT9083B2-0 Pulse Width: 200 ns
Opt. Module: Index: 1.468200
Fiber Type: Singlemode WaveLength: 1550 nm
FAS Thresholds: Horz. Shift: 0 ft
Loss: 0.05 dB Vert. Shift: 0.00 dB
Reflectance: -60.00 dB No. Averages: 5120
Fiber Break: 3.00 dB
Backscatter: -81.50 Trace Type: SR4731
Trace Flags: Analysis
ORL: N/A
  
```

Analysis Results -- BLOCKDILL1550.032.SOR

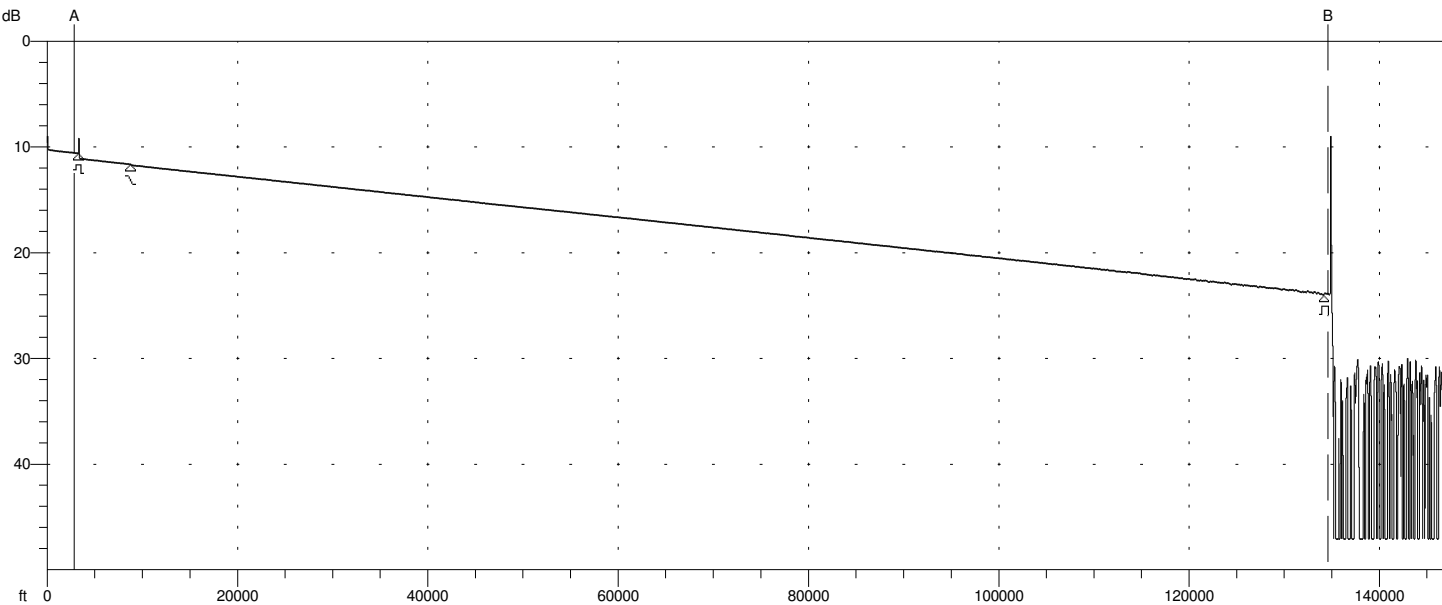
| Feature #/Type | Location (ft) | Event-Event (dB) (dB/Km) | Loss (dB) | Ref1 (dB) |
|----------------|---------------|--------------------------|-----------|-----------|
| 1/R            | 3218          | -6.18 -6.303             | 0.28      | >-55.42   |
| 2/N            | 8765          | 0.32 0.188               | 0.09      |           |
| 3/E            | 134679        | 7.12 0.185               | >3.00     | >-14.95   |

Overall (End-to-End) Loss: 1.63 dB



BLOCKDILL1310.033.SOR

328311 ft/16.416 ft



|                   |                         |                    |
|-------------------|-------------------------|--------------------|
| A: 2836 ft        | Index: 1.467700         | [H] 200ns / 65.6ft |
| B: 134584 ft      | 2-Point Loss: 13.300 dB | Avg: Fast 5120     |
| A -> B: 131748 ft | Reflectance: N/A        | /1310 nm/SM        |

```

----- Page 1 -----
[ Language: EN ]
[ Cable ID: ]
[ Fiber ID: 33 ]
[ Wavelength: 1310 ]
[ Org. Loc: ]
[ Term. Loc: ]
[ Cable Code: ]
[ Condition: OT ]
[ Operator: ]
[ Comment: ]
[ Supplier: Anritsu ]
[ OTDR Model: MT9083B2-063 ]
[ S/N: 6201256400 ]
[ Optics Mod: ]
[ S/N: ]
[ S/W Rev.: 1.05 ]
[ Other: ]

```

```

Primary Trace: BLOCKDILL1310.033.SOR
Date: 09/16/16 Range: 328311 ft
Time: 09:54 AM Resolution: 16.416 ft
Product Type: MT9083B2-0 Pulse Width: 200 ns
Opt. Module: Index: 1.467700
Fiber Type: Singlemode WaveLength: 1310 nm
FAS Thresholds: Horz. Shift: 0 ft
Loss: 0.05 dB Vert. Shift: 0.00 dB
Reflectance: -60.00 dB No. Averages: 5120
Fiber Break: 3.00 dB
Backscatter: -78.50 Trace Type: SR4731
Trace Flags: Analysis
ORL: N/A

```

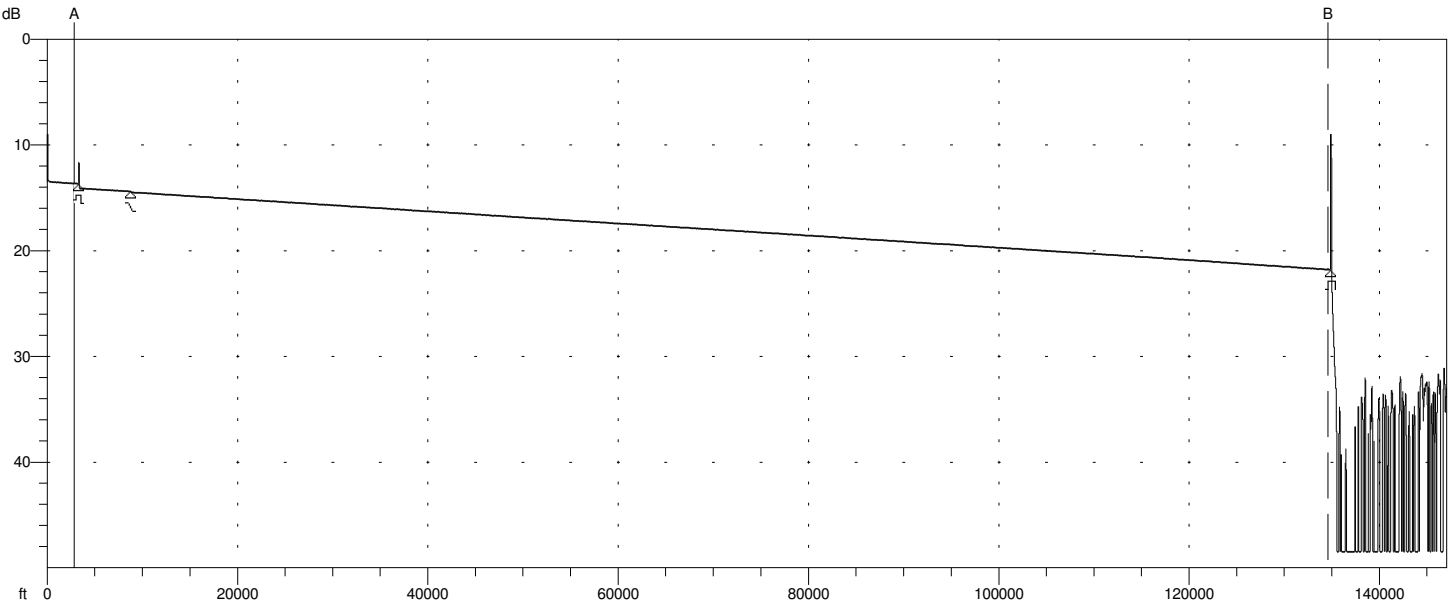
Analysis Results -- BLOCKDILL1310.033.SOR

| Feature #/Type | Location (ft) | Event-Event (dB) (dB/Km) | Loss (dB) | Ref1 (dB) |
|----------------|---------------|--------------------------|-----------|-----------|
| 1/R            | 3252          | ?? ??                    | 0.50      | >-55.95   |
| 2/N            | 8751          | 0.53 0.318               | 0.07      |           |
| 3/E            | 134155        | 12.29 0.321              | >3.00     | >-14.40   |

Overall (End-to-End) Loss: ??

BLOCKDILL1550.033.SOR

328311 ft/16.416 ft



|                   |                        |                    |
|-------------------|------------------------|--------------------|
| A: 2836 ft        | Index: 1.468200        | [H] 200ns / 65.6ft |
| B: 134584 ft      | 2-Point Loss: 8.134 dB | Avg: Fast 5120     |
| A -> B: 131748 ft | Reflectance: N/A       | /1550 nm/SM        |

```

----- Page 1 -----
[ Language: EN ]
[ Cable ID: ]
[ Fiber ID: 33 ]
[ Wavelength: 1550 ]
[ Org. Loc: ]
[ Term. Loc: ]
[ Cable Code: ]
[ Condition: OT ]
[ Operator: ]
[ Comment: ]
[ Supplier: Anritsu ]
[ OTDR Model: MT9083B2-063 ]
[ S/N: 6201256400 ]
[ Optics Mod: ]
[ S/N: ]
[ S/W Rev.: 1.05 ]
[ Other: ]

```

```

Primary Trace: BLOCKDILL1550.033.SOR
Date: 09/16/16 Range: 328311 ft
Time: 09:54 AM Resolution: 16.416 ft
Product Type: MT9083B2-0 Pulse Width: 200 ns
Opt. Module: Index: 1.468200
Fiber Type: Singlemode WaveLength: 1550 nm
FAS Thresholds: Horz. Shift: 0 ft
Loss: 0.05 dB Vert. Shift: 0.00 dB
Reflectance: -60.00 dB No. Averages: 5120
Fiber Break: 3.00 dB
Backscatter: -81.50 Trace Type: SR4731
Trace Flags: Analysis
ORL: N/A

```

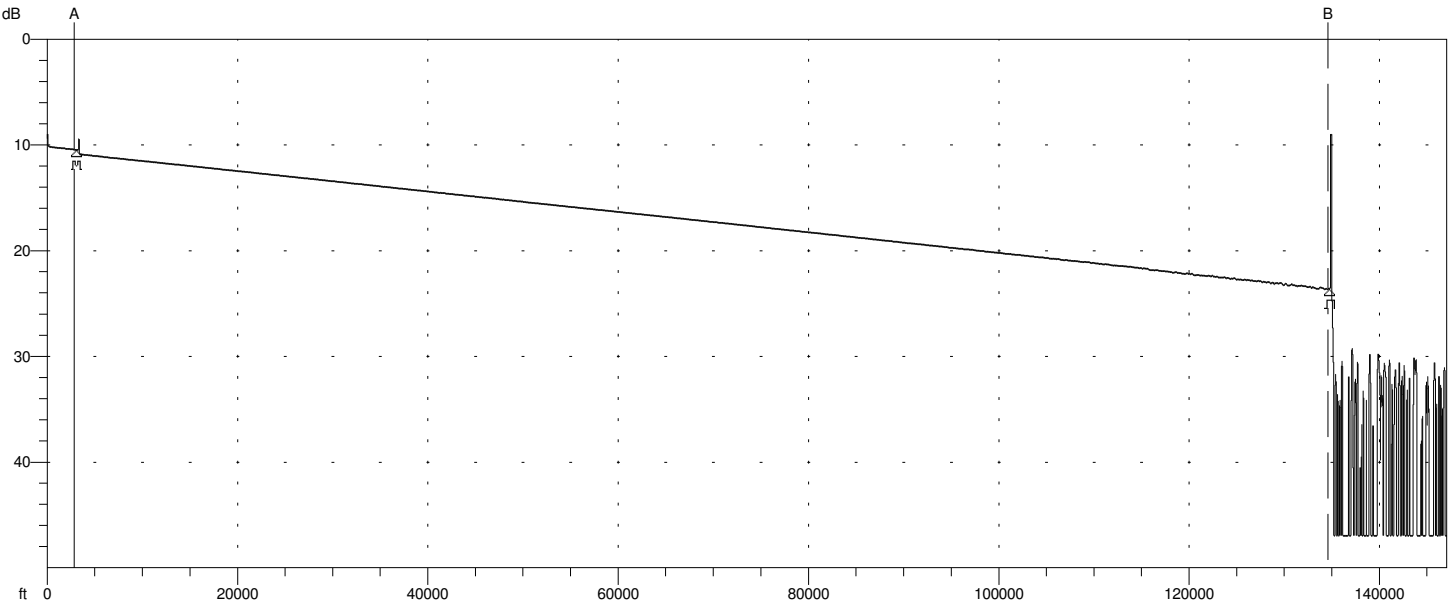
Analysis Results -- BLOCKDILL1550.033.SOR

| Feature #/Type | Location (ft) | Event-Event (dB) (dB/Km) | Loss (dB) | Refl (dB) |
|----------------|---------------|--------------------------|-----------|-----------|
| 1/R            | 3285          | -6.51 -6.503             | 0.44      | >-56.86   |
| 2/N            | 8748          | 0.31 0.188               | 0.07      |           |
| 3/E            | 134847        | 7.32 0.190               | >3.00     | >-14.96   |

Overall (End-to-End) Loss: 1.63 dB

BLOCKDILL1310.034.SOR

328311 ft/16.416 ft



|                   |                         |                    |
|-------------------|-------------------------|--------------------|
| A: 2836 ft        | Index: 1.467700         | [H] 200ns / 65.6ft |
| B: 134584 ft      | 2-Point Loss: 13.232 dB | Avg: Fast 5120     |
| A -> B: 131748 ft | Reflectance: N/A        | /1310 nm/SM        |

```

----- Page 1 -----
[ Language: EN ]
[ Cable ID: ]
[ Fiber ID: 34 ]
[ Wavelength: 1310 ]
[ Org. Loc: ]
[ Term. Loc: ]
[ Cable Code: ]
[ Condition: OT ]
[ Operator: ]
[ Comment: ]
[ Supplier: Anritsu ]
[ OTDR Model: MT9083B2-063 ]
[ S/N: 6201256400 ]
[ Optics Mod: ]
[ S/N: ]
[ S/W Rev.: 1.05 ]
[ Other: ]
    
```

```

Primary Trace: BLOCKDILL1310.034.SOR
Date: 09/16/16 Range: 328311 ft
Time: 09:55 AM Resolution: 16.416 ft
Product Type: MT9083B2-0 Pulse Width: 200 ns
Opt. Module: Index: 1.467700
Fiber Type: Singlemode WaveLength: 1310 nm
FAS Thresholds: Horz. Shift: 0 ft
Loss: 0.05 dB Vert. Shift: 0.00 dB
Reflectance: -60.00 dB No. Averages: 5120
Fiber Break: 3.00 dB
Backscatter: -78.50 Trace Type: SR4731
Trace Flags: Analysis
ORL: N/A
    
```

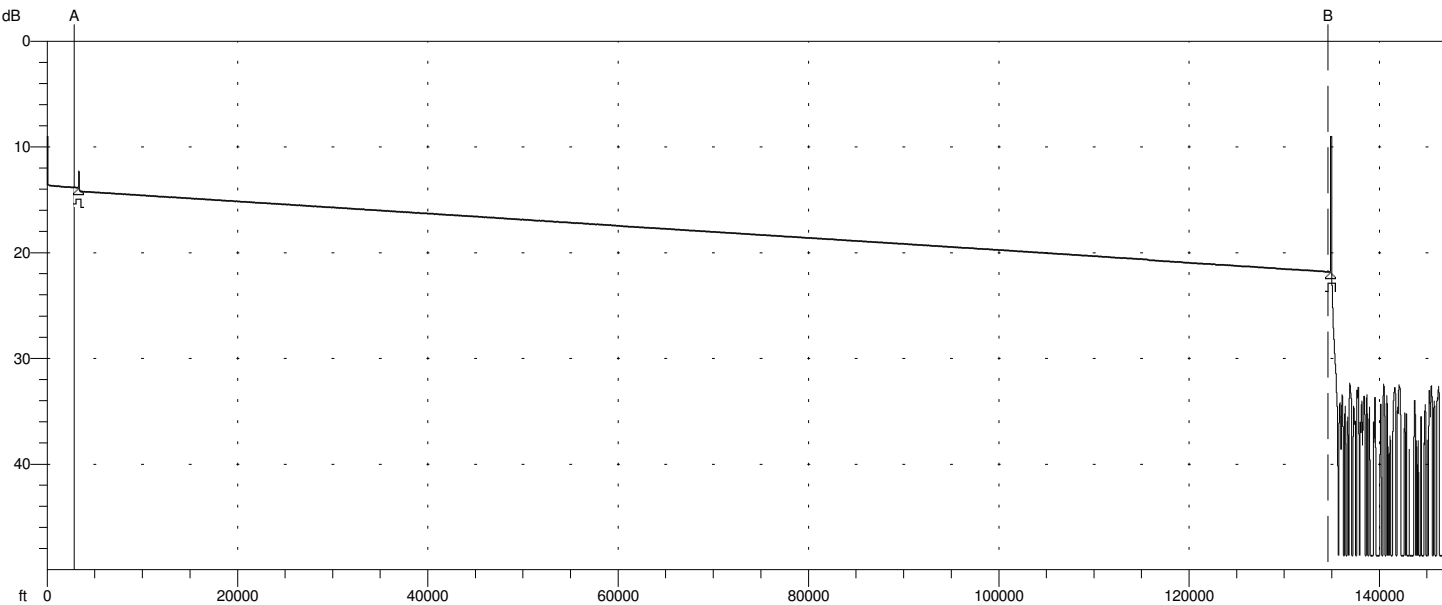
Analysis Results -- BLOCKDILL1310.034.SOR

| Feature #/Type | Location (ft) | Event-Event (dB) (dB/Km) | Loss (dB) | Ref1 (dB) |
|----------------|---------------|--------------------------|-----------|-----------|
| 1/G            | 3051-3739     | ?? ??                    | 0.39      |           |
| 2/E            | 134759        | 12.75 0.318              | >3.00     | >-14.66   |

Overall (End-to-End) Loss: ??

BLOCKDILL1550.034.SOR

328311 ft/16.416 ft



|                   |                        |                    |
|-------------------|------------------------|--------------------|
| A: 2836 ft        | Index: 1.468200        | [H] 200ns / 65.6ft |
| B: 134584 ft      | 2-Point Loss: 7.992 dB | Avg: Fast 5120     |
| A -> B: 131748 ft | Reflectance: N/A       | /1550 nm/SM        |

```

----- Page 1 -----
[ Language: EN ]
[ Cable ID: ]
[ Fiber ID: 34 ]
[ Wavelength: 1550 ]
[ Org. Loc: ]
[ Term. Loc: ]
[ Cable Code: ]
[ Condition: OT ]
[ Operator: ]
[ Comment: ]
[ Supplier: Anritsu ]
[ OTDR Model: MT9083B2-063 ]
[ S/N: 6201256400 ]
[ Optics Mod: ]
[ S/N: ]
[ S/W Rev.: 1.05 ]
[ Other: ]
    
```

```

Primary Trace: BLOCKDILL1550.034.SOR
Date: 09/16/16 Range: 328311 ft
Time: 09:55 AM Resolution: 16.416 ft
Product Type: MT9083B2-0 Pulse Width: 200 ns
Opt. Module: Index: 1.468200
Fiber Type: Singlemode WaveLength: 1550 nm
FAS Thresholds: Horz. Shift: 0 ft
Loss: 0.05 dB Vert. Shift: 0.00 dB
Reflectance: -60.00 dB No. Averages: 5120
Fiber Break: 3.00 dB
Backscatter: -81.50 Trace Type: SR4731
Trace Flags: Analysis
ORL: N/A
    
```

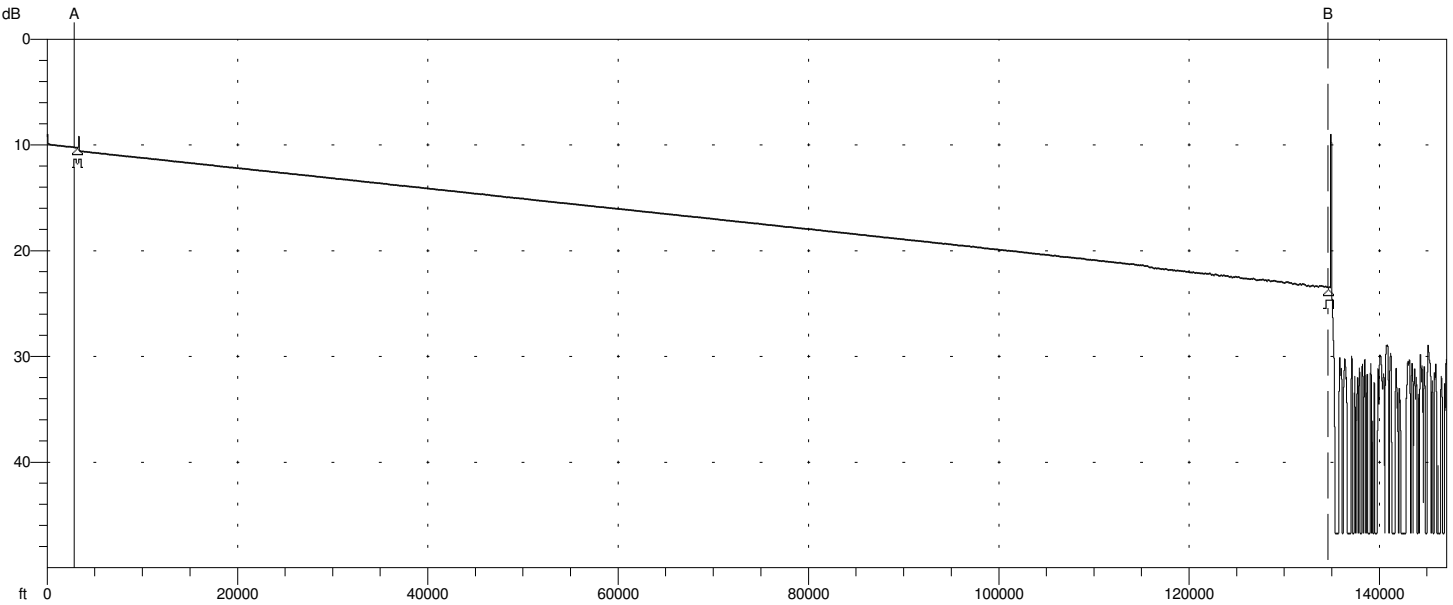
Analysis Results -- BLOCKDILL1550.034.SOR

| Feature #/Type | Location (ft) | Event-Event (dB) (dB/Km) | Loss (dB) | Ref1 (dB) |
|----------------|---------------|--------------------------|-----------|-----------|
| 1/R            | 3285          | -6.29 -6.282             | 0.33      | >-58.34   |
| 2/E            | 134864        | 7.63 0.190               | >3.00     | >-14.93   |

Overall (End-to-End) Loss: 1.67 dB

BLOCKDILL1310.035.SOR

328311 ft/16.416 ft



|                   |                         |                    |
|-------------------|-------------------------|--------------------|
| A: 2836 ft        | Index: 1.467700         | [H] 200ns / 65.6ft |
| B: 134584 ft      | 2-Point Loss: 13.232 dB | Avg: Fast 5120     |
| A -> B: 131748 ft | Reflectance: N/A        | /1310 nm/SM        |

```

----- Page 1 -----
[ Language: EN ]
[ Cable ID: ]
[ Fiber ID: 35 ]
[ Wavelength: 1310 ]
[ Org. Loc: ]
[ Term. Loc: ]
[ Cable Code: ]
[ Condition: OT ]
[ Operator: ]
[ Comment: ]
[ Supplier: Anritsu ]
[ OTDR Model: MT9083B2-063 ]
[ S/N: 6201256400 ]
[ Optics Mod: ]
[ S/N: ]
[ S/W Rev.: 1.05 ]
[ Other: ]
  
```

```

Primary Trace: BLOCKDILL1310.035.SOR
Date: 09/16/16 Range: 328311 ft
Time: 09:55 AM Resolution: 16.416 ft
Product Type: MT9083B2-0 Pulse Width: 200 ns
Opt. Module: Index: 1.467700
Fiber Type: Singlemode WaveLength: 1310 nm
FAS Thresholds: Horz. Shift: 0 ft
Loss: 0.05 dB Vert. Shift: 0.00 dB
Reflectance: -60.00 dB No. Averages: 5120
Fiber Break: 3.00 dB
Backscatter: -78.50 Trace Type: SR4731
Trace Flags: Analysis
ORL: N/A
  
```

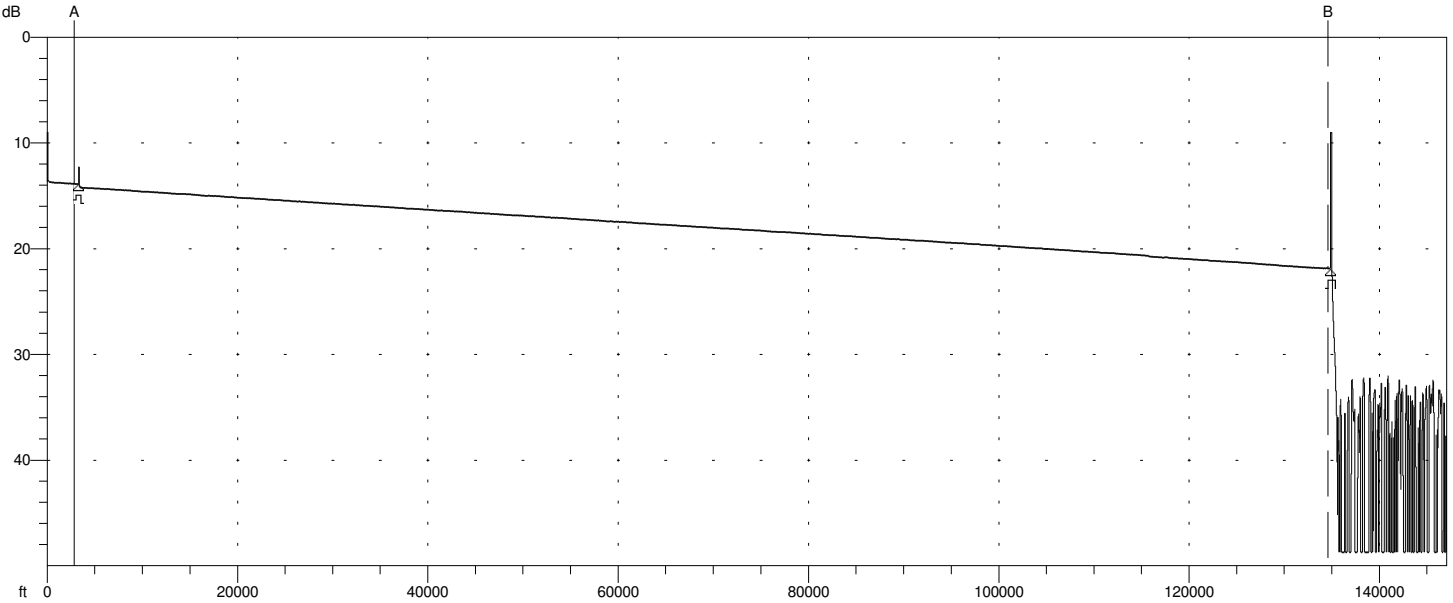
Analysis Results -- BLOCKDILL1310.035.SOR

| Feature #/Type | Location (ft) | Event-Event (dB) (dB/Km) | Loss (dB) | Ref1 (dB) |
|----------------|---------------|--------------------------|-----------|-----------|
| 1/G            | 3135-3571     | ?? ??                    | 0.31      |           |
| 2/E            | 134675        | 13.00 0.324              | >3.00     | >-14.12   |

Overall (End-to-End) Loss: ??

BLOCKDILL1550.035.SOR

328311 ft/16.416 ft



|                   |                        |                    |
|-------------------|------------------------|--------------------|
| A: 2836 ft        | Index: 1.468200        | [H] 200ns / 65.6ft |
| B: 134584 ft      | 2-Point Loss: 7.999 dB | Avg: Fast 5120     |
| A -> B: 131748 ft | Reflectance: N/A       | /1550 nm/SM        |

```

----- Page 1 -----
[ Language: EN ]
[ Cable ID: ]
[ Fiber ID: 35 ]
[ Wavelength: 1550 ]
[ Org. Loc: ]
[ Term. Loc: ]
[ Cable Code: ]
[ Condition: OT ]
[ Operator: ]
[ Comment: ]
[ Supplier: Anritsu ]
[ OTDR Model: MT9083B2-063 ]
[ S/N: 6201256400 ]
[ Optics Mod: ]
[ S/N: ]
[ S/W Rev.: 1.05 ]
[ Other: ]
    
```

```

Primary Trace: BLOCKDILL1550.035.SOR
Date: 09/16/16 Range: 328311 ft
Time: 09:56 AM Resolution: 16.416 ft
Product Type: MT9083B2-0 Pulse Width: 200 ns
Opt. Module: Index: 1.468200
Fiber Type: Singlemode WaveLength: 1550 nm
FAS Thresholds: Horz. Shift: 0 ft
Loss: 0.05 dB Vert. Shift: 0.00 dB
Reflectance: -60.00 dB No. Averages: 5120
Fiber Break: 3.00 dB
Backscatter: -81.50 Trace Type: SR4731
Trace Flags: Analysis
ORL: N/A
    
```

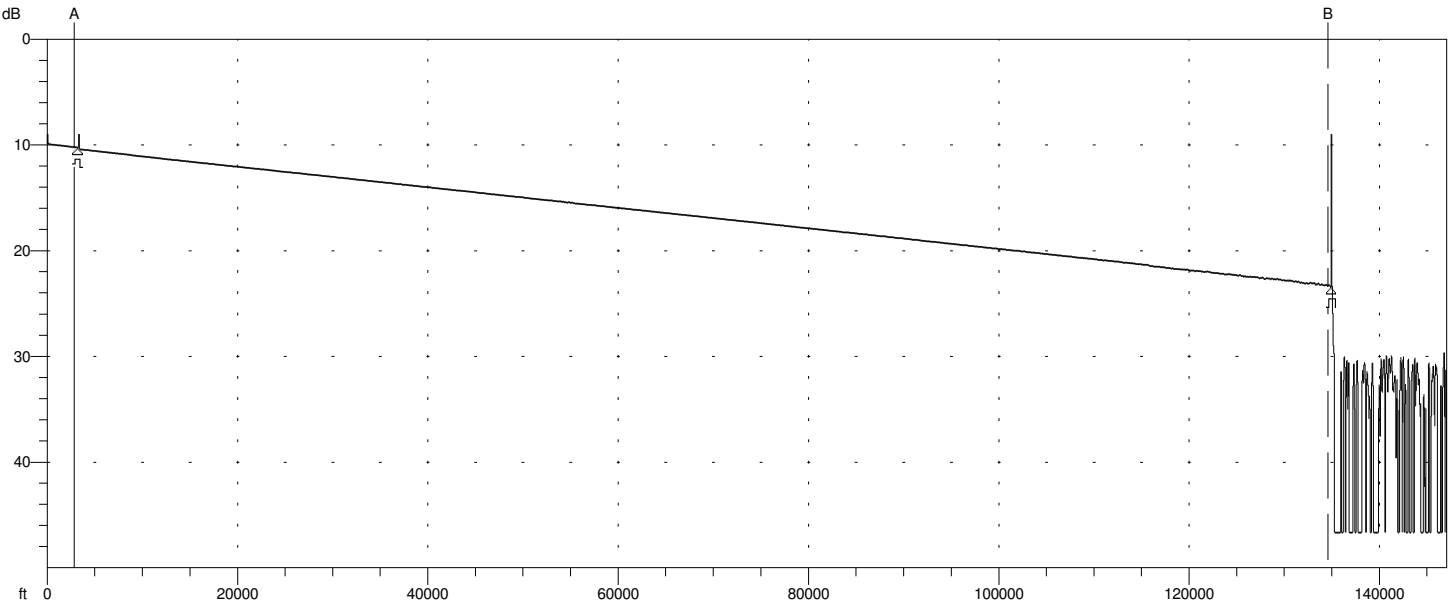
Analysis Results -- BLOCKDILL1550.035.SOR

| Feature #/Type | Location (ft) | Event-Event (dB) (dB/Km) | Loss (dB) | Refl (dB) |
|----------------|---------------|--------------------------|-----------|-----------|
| 1/R            | 3285          | -6.29 -6.282             | 0.30      | >-58.19   |
| 2/E            | 134864        | 7.69 0.192               | >3.00     | >-14.81   |

Overall (End-to-End) Loss: 1.70 dB

BLOCKDILL1310.036.SOR

328311 ft/16.416 ft



|                   |                         |                    |
|-------------------|-------------------------|--------------------|
| A: 2836 ft        | Index: 1.467700         | [H] 200ns / 65.6ft |
| B: 134584 ft      | 2-Point Loss: 13.094 dB | Avg: Fast 5120     |
| A -> B: 131748 ft | Reflectance: N/A        | /1310 nm/SM        |

```

----- Page 1 -----
[ Language: EN ]
[ Cable ID: ]
[ Fiber ID: 36 ]
[ Wavelength: 1310 ]
[ Org. Loc: ]
[ Term. Loc: ]
[ Cable Code: ]
[ Condition: OT ]
[ Operator: ]
[ Comment: ]
[ Supplier: Anritsu ]
[ OTDR Model: MT9083B2-063 ]
[ S/N: 6201256400 ]
[ Optics Mod: ]
[ S/N: ]
[ S/W Rev.: 1.05 ]
[ Other: ]

```

```

Primary Trace: BLOCKDILL1310.036.SOR
Date: 09/16/16 Range: 328311 ft
Time: 09:56 AM Resolution: 16.416 ft
Product Type: MT9083B2-0 Pulse Width: 200 ns
Opt. Module: Index: 1.467700
Fiber Type: Singlemode WaveLength: 1310 nm
FAS Thresholds: Horz. Shift: 0 ft
Loss: 0.05 dB Vert. Shift: 0.00 dB
Reflectance: -60.00 dB No. Averages: 5120
Fiber Break: 3.00 dB
Backscatter: -78.50 Trace Type: SR4731
Trace Flags: Analysis
ORL: N/A

```

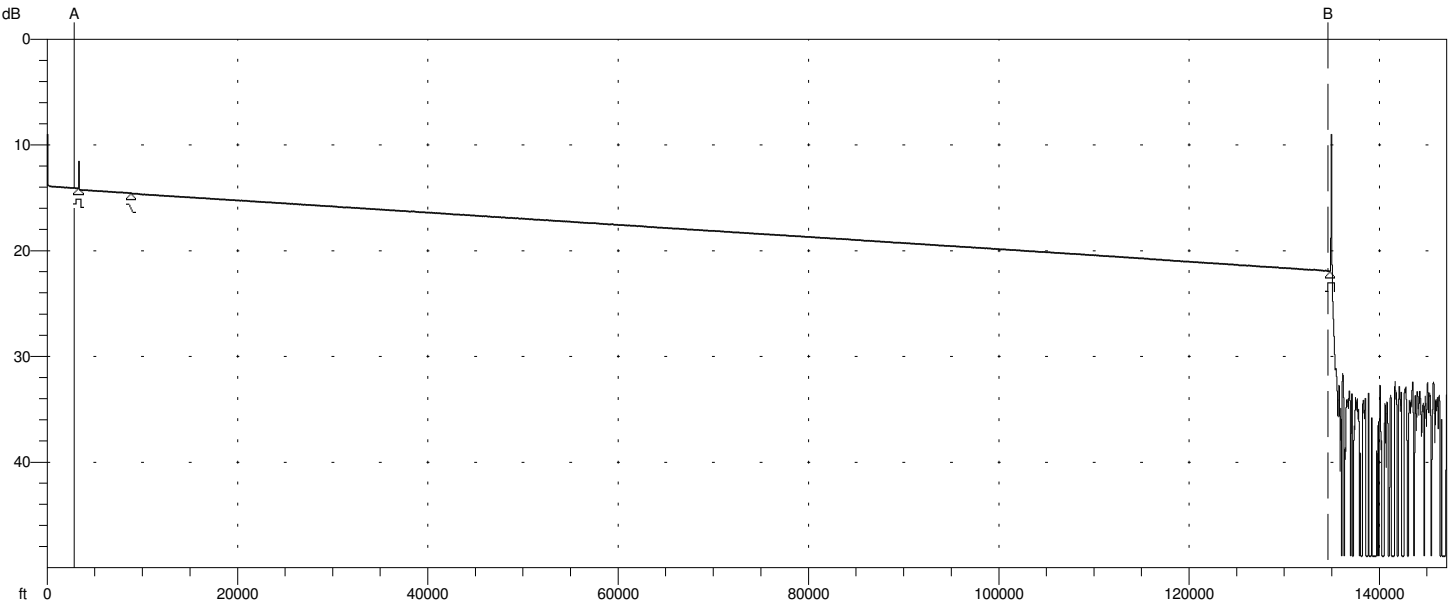
Analysis Results -- BLOCKDILL1310.036.SOR

| Feature #/Type | Location (ft) | Event-Event (dB) (dB/Km) | Loss (dB) | Ref1 (dB) |
|----------------|---------------|--------------------------|-----------|-----------|
| 1/R            | 3202          | -8.17 -8.369             | 0.14      | >-53.97   |
| 2/E            | 134910        | 13.07 0.326              | >3.00     | >-13.79   |

Overall (End-to-End) Loss: 5.05 dB

BLOCKDILL1550.036.SOR

328311 ft/16.416 ft



|                   |                        |                    |
|-------------------|------------------------|--------------------|
| A: 2836 ft        | Index: 1.468200        | [H] 200ns / 65.6ft |
| B: 134584 ft      | 2-Point Loss: 7.851 dB | Avg: Fast 5120     |
| A -> B: 131748 ft | Reflectance: N/A       | /1550 nm/SM        |

```

----- Page 1 -----
[ Language: EN ]
[ Cable ID: ]
[ Fiber ID: 36 ]
[ Wavelength: 1550 ]
[ Org. Loc: ]
[ Term. Loc: ]
[ Cable Code: ]
[ Condition: OT ]
[ Operator: ]
[ Comment: ]
[ Supplier: Anritsu ]
[ OTDR Model: MT9083B2-063 ]
[ S/N: 6201256400 ]
[ Optics Mod: ]
[ S/N: ]
[ S/W Rev.: 1.05 ]
[ Other: ]
  
```

```

Primary Trace: BLOCKDILL1550.036.SOR
Date: 09/16/16 Range: 328311 ft
Time: 09:57 AM Resolution: 16.416 ft
Product Type: MT9083B2-0 Pulse Width: 200 ns
Opt. Module: Index: 1.468200
Fiber Type: Singlemode WaveLength: 1550 nm
FAS Thresholds: Horz. Shift: 0 ft
Loss: 0.05 dB Vert. Shift: 0.00 dB
Reflectance: -60.00 dB No. Averages: 5120
Fiber Break: 3.00 dB
Backscatter: -81.50 Trace Type: SR4731
Trace Flags: Analysis
ORL: N/A
  
```

Analysis Results -- BLOCKDILL1550.036.SOR

| Feature #/Type | Location (ft) | Event-Event (dB) (dB/Km) | Loss (dB) | Refl (dB) |
|----------------|---------------|--------------------------|-----------|-----------|
| 1/R            | 3235          | -6.06 -6.151             | 0.13      | >-55.10   |
| 2/N            | 8782          | 0.31 0.185               | 0.06      |           |
| 3/E            | 134813        | 7.35 0.191               | >3.00     | >-14.65   |

Overall (End-to-End) Loss: 1.79 dB